



# Kaleidoscope

## WELLNESS RETREAT

Pune, India  
2020

### BRIEF

- create a safe haven for the Queer Community– a place where they can come and relax, spend time and share experiences with other members of the community, and build a healing support system for each other.
- the building should feel like a Wellness Retreat, while encouraging a sense of community and belonging.

### SOFTWARE USED

- AutoCAD
- SketchUp
- Rayelectron
- Enscape
- Adobe Photoshop

### DESCRIPTION

The concept for Kaleidoscope is derived from Bubbles, since they can appear like floating rainbows. The LGBTQ+ community is almost always depicted through the use of rainbows and pride flags, which is why bubbles seem like a perfect fit.

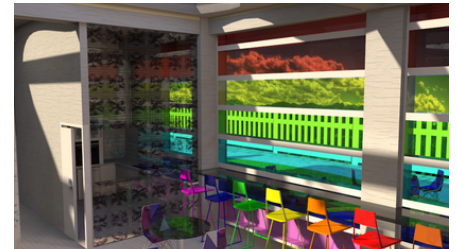
Spaces for various kinds of therapy have been included, including pet therapy, group therapy, individual therapy and art therapy. These spaces have been designed and placed to receive a good amount of natural light to appear more warm, welcoming and safe. Vibrant colours are further highlighted by natural light, along with neutral colours of the floor and the walls.

Kaleidoscope was designed to act like a safe space providing support through spatial planning, and a sense of community.

### KEY VISUALISATIONS



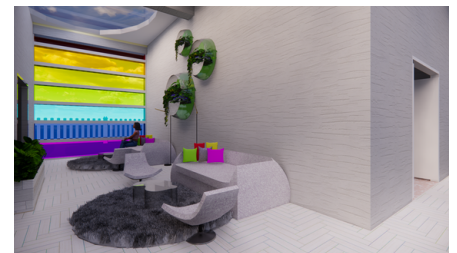
Courtyard



Communal Eating Area



Pet Therapy



Lounge

### MATERIALS



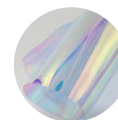
White  
Herringbone



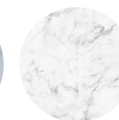
Glass



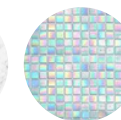
Tinted Glass



Holographic  
Film



Calacatta  
Marble

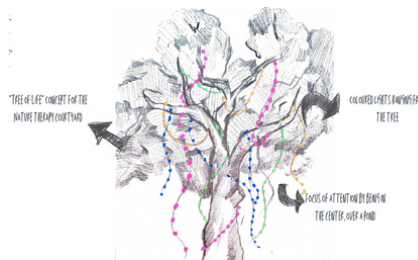


Light Iridescent  
Tiles

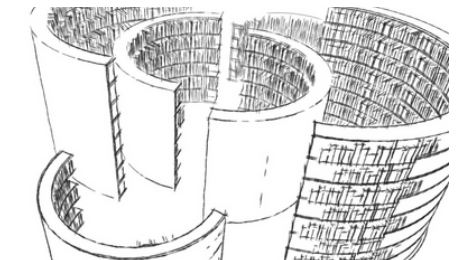


Dark Iridescent  
Tiles

### SKETCHES



Concept for Courtyard



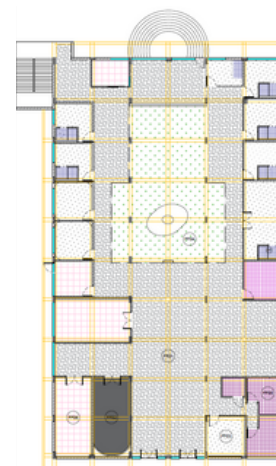
Library Concept

### PLANS



Furniture Plan

NO.	DESCRIPTION	QTY	UNIT
1	...	...	...
2	...	...	...
3	...	...	...
4	...	...	...
5	...	...	...
6	...	...	...
7	...	...	...
8	...	...	...
9	...	...	...
10	...	...	...
11	...	...	...
12	...	...	...
13	...	...	...
14	...	...	...
15	...	...	...
16	...	...	...
17	...	...	...
18	...	...	...
19	...	...	...
20	...	...	...
21	...	...	...
22	...	...	...
23	...	...	...
24	...	...	...
25	...	...	...
26	...	...	...
27	...	...	...
28	...	...	...
29	...	...	...
30	...	...	...
31	...	...	...
32	...	...	...
33	...	...	...
34	...	...	...
35	...	...	...
36	...	...	...
37	...	...	...
38	...	...	...
39	...	...	...
40	...	...	...
41	...	...	...
42	...	...	...
43	...	...	...
44	...	...	...
45	...	...	...
46	...	...	...
47	...	...	...
48	...	...	...
49	...	...	...
50	...	...	...
51	...	...	...
52	...	...	...
53	...	...	...
54	...	...	...
55	...	...	...
56	...	...	...
57	...	...	...
58	...	...	...
59	...	...	...
60	...	...	...
61	...	...	...
62	...	...	...
63	...	...	...
64	...	...	...
65	...	...	...
66	...	...	...
67	...	...	...
68	...	...	...
69	...	...	...
70	...	...	...
71	...	...	...
72	...	...	...
73	...	...	...
74	...	...	...
75	...	...	...
76	...	...	...
77	...	...	...
78	...	...	...
79	...	...	...
80	...	...	...
81	...	...	...
82	...	...	...
83	...	...	...
84	...	...	...
85	...	...	...
86	...	...	...
87	...	...	...
88	...	...	...
89	...	...	...
90	...	...	...
91	...	...	...
92	...	...	...
93	...	...	...
94	...	...	...
95	...	...	...
96	...	...	...
97	...	...	...
98	...	...	...
99	...	...	...
100	...	...	...



Flooring Plan

NO.	DESCRIPTION	QTY	UNIT
1	...	...	...
2	...	...	...
3	...	...	...
4	...	...	...
5	...	...	...
6	...	...	...
7	...	...	...
8	...	...	...
9	...	...	...
10	...	...	...
11	...	...	...
12	...	...	...
13	...	...	...
14	...	...	...
15	...	...	...
16	...	...	...
17	...	...	...
18	...	...	...
19	...	...	...
20	...	...	...
21	...	...	...
22	...	...	...
23	...	...	...
24	...	...	...
25	...	...	...
26	...	...	...
27	...	...	...
28	...	...	...
29	...	...	...
30	...	...	...
31	...	...	...
32	...	...	...
33	...	...	...
34	...	...	...
35	...	...	...
36	...	...	...
37	...	...	...
38	...	...	...
39	...	...	...
40	...	...	...
41	...	...	...
42	...	...	...
43	...	...	...
44	...	...	...
45	...	...	...
46	...	...	...
47	...	...	...
48	...	...	...
49	...	...	...
50	...	...	...
51	...	...	...
52	...	...	...
53	...	...	...
54	...	...	...
55	...	...	...
56	...	...	...
57	...	...	...
58	...	...	...
59	...	...	...
60	...	...	...
61	...	...	...
62	...	...	...
63	...	...	...
64	...	...	...
65	...	...	...
66	...	...	...
67	...	...	...
68	...	...	...
69	...	...	...
70	...	...	...
71	...	...	...
72	...	...	...
73	...	...	...
74	...	...	...
75	...	...	...
76	...	...	...
77	...	...	...
78	...	...	...
79	...	...	...
80	...	...	...
81	...	...	...
82	...	...	...
83	...	...	...
84	...	...	...
85	...	...	...
86	...	...	...
87	...	...	...
88	...	...	...
89	...	...	...
90	...	...	...
91	...	...	...
92	...	...	...
93	...	...	...
94	...	...	...
95	...	...	...
96	...	...	...
97	...	...	...
98	...	...	...
99	...	...	...
100	...	...	...





# KOI Botanical

## DESSERT BAR

1 Mrs Macquaries Rd, Sydney NSW  
2022

### BRIEF

- proposing and designing a new food venture for celebrity dessert chef Reynold Poernomo
- deriving inspiration from his unusual and extraordinary desserts and delicacies
- including design elements that cater to the five senses
- tie-in the design with nature and natural elements

### SOFTWARE USED

- AutoCAD
- SketchUp
- Rayelectron
- Enscape
- Adobe Photoshop

### DESCRIPTION

KOI Botanical was designed to create an almost transitional space between the exterior and the interior. The idea was to feel surrounded by nature while being in an enclosed space.

The materiality and colour palette play a crucial role in making the space feel natural. The colour scheme involves the use of a set of earthy, warm-toned shades, including emerald green, sage, grey, olive green, walnut, and forest green. To create the sense of being in a forest, an inviting teak herringbone flooring spreads out over the main dining area, with a lime-washed sage tiled flooring used towards the centre of the space, both divided by a subtle copper inlay.

Japanese-style floor seating is placed near the windows, with beautiful light teak tables and green suede floor cushions. The relaxed seating includes rattan-wicker chairs and modern glass tables, fusing natural and man-made worlds together. A display counter surrounded by seating spans the centre of the space, located directly under the skylight, bringing in additional focus.

### KEY VISUALISATIONS



Moss Wall



Outdoor Eating Area

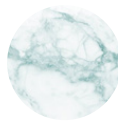


Dining Area

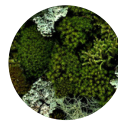


Dining Area

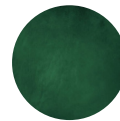
### MATERIALS



Persian Green  
Marble



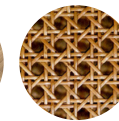
Moss



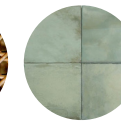
Emerald Suede



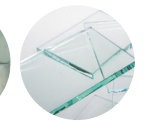
Oak  
Herringbone



Rattan +  
Wicker

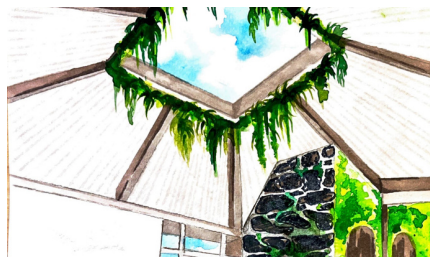


Limewashed  
Tiles

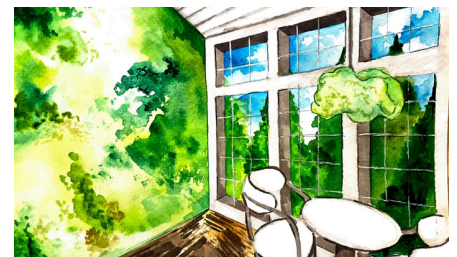


Glass

### SKETCHES

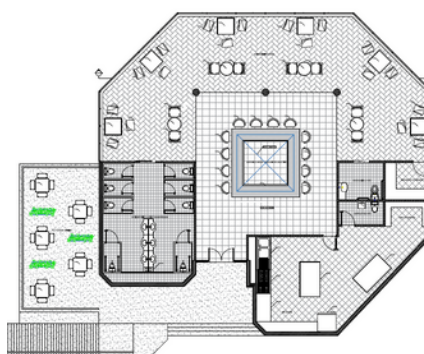


Skylight Concept

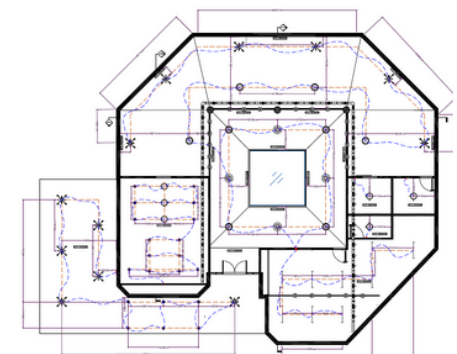


Moss Wall Concept

### PLANS



Furniture Plan



Lighting Plan





# Jhoomer

## BED & BREAKFAST

Byculla East, Mumbai, Maharashtra 400027, India  
2022

### BRIEF

- transform the space into an adaptive reuse
- create a luxurious bed-and-breakfast
- include historical elements
- include banquet spaces, lounge and central dining

### SOFTWARE USED

- AutoCAD
- SketchUp
- Rayelectron
- Enscape
- Adobe Photoshop

### DESCRIPTION

The concept behind Jhoomer (a Hindi word that translates to Chandelier) was to create a space that felt rich, luxurious, and dripping with gold. The key idea was to create an aesthetic by combining features from Art Deco, Bohemian style, and traditional Indian elements.

The colour palette and materials were chosen for their ability to appear opulent. These included Calacatta Gold and Portoro marble, black marble with gold veins, golden ornamentation, and damask wallpapers, tied together with a palette of deep emerald, crimson, royal blue, and nectar yellow.

he most important feature is the central dining area, which is an open-plan space, targeted to receive the maximum amount of foot traffic. The dining is connected to a buffet, as well as a cafe/bar service counter, both of which are open to any person accessing the space. The dining area rests directly under the double-height ceiling, giving a sense of vastness to the space, further reinforced by the water feature mirroring the chandelier suspended above.

### KEY VISUALISATIONS



Dining + Museum Walkway



Waiting Area



First Floor Balcony

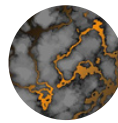


Lounge Area

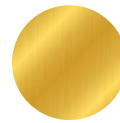
### MATERIALS



Checkered Tiles



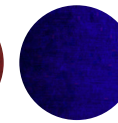
Portoro Marble



Metallic Gold Finish



Crimson Velvet



Sapphire Suede

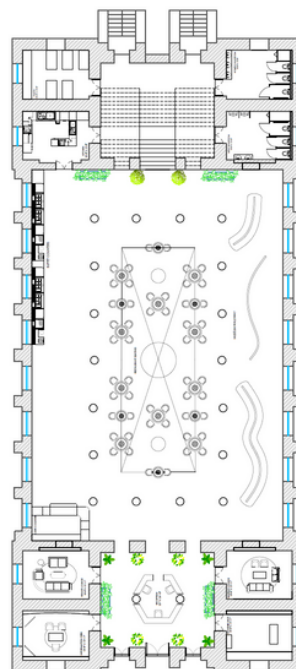


Bohemian Art Wallpaper

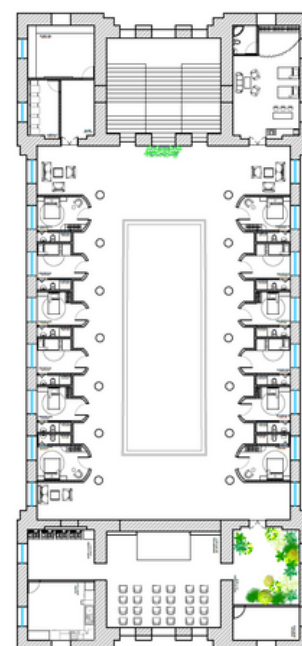


White Tiles with Gold Inlay

### PLANS



Ground Floor



First Floor



## BRIEF

- design a living and dining space
- design a bedroom
- derive inspiration from a subculture
- tie in the subculture with an art movement

## SOFTWARE USED

- AutoCAD
- SketchUp
- Raylectron
- Enscape
- Adobe Photoshop

## DESCRIPTION

Adoria is a product of subcultures Dark Academia, Cottagecore, and the art movement Romanticism. The idea was to fill the space with details you would not put in a modern space, which included busy wallpapers, dark finishes and heavy ornamentation. It was a very exciting project because it encouraged creativity as well as knowing how to balance a maximalist aesthetic.

The key design feature of this space is the wall with the fireplace, surrounded by enormous Romanticism-inspired paintings. The metallic finishes of the frames complimented by the metallic finish of display items bring the entire aesthetic together. A colour scheme of crimson and emerald has been followed throughout, with hints of brown and cream to balance them out.

The fabrics chosen are era-appropriate, with increased importance given to details like tufting and prints. The lighting has been kept simple, focusing on incandescence and warmth.

Adoria transports you to a different era, allowing you to live in a dream-like space.

Adoria was a styling project within the confines of a bedroom and a living space.

## KEY VISUALISATIONS



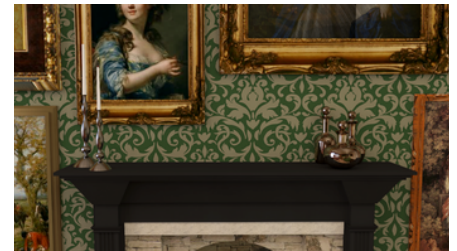
Living Space



Bedroom



Dining



Fireplace



Bedroom and Study



Bay Window



Armchair



Dining

## MATERIALS



Faux Leather



Floral Wallpaper



Walnut Timber



Emerald Damask Wallpaper



Floral Wallpaper with Lillies

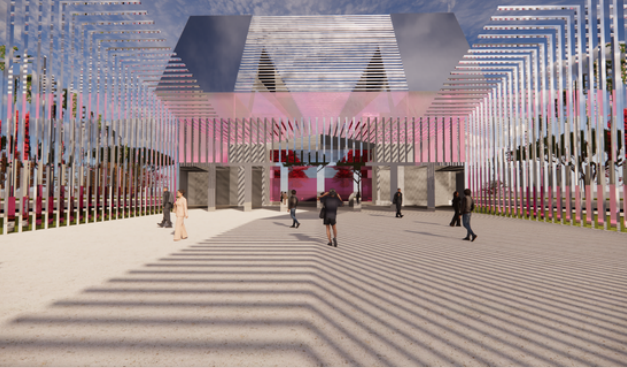


Beige Damask Wallpaper



Antique Brushed Gold





# Roseus

## THEATRE

Botanic Gardens, Viterbo, Italy  
2023

### BRIEF

- derive inspiration from Louis Kahn
- utilise the CUBUS Method by Robert Tuckwell
- create a theatre/amphitheatre
- include landscape design

### SOFTWARE USED

- AutoCAD
- SketchUp
- Raylectron
- Enscape
- Adobe Photoshop

### DESCRIPTION

Geometry is an integral part of design. This project harnesses that power through the use of the CUBUS method formulated by Robert Tuckwell. The ideation process began by creating various types of geometries on 'grids'. This was later developed into details and features to be translated into a spatial solution. This is where the Theatre comes in.

Creativity and freedom of design and expression played crucial roles in this project. The use of natural light, layering and circulation all add to the inspiration derived from the works of Louis Kahn. Light and shadow play an important role in bringing this experience to life. The idea was to combine elements from the Renaissance and Post Modernism to create a sense of drama.

The landscape brings the aesthetics of the theatre together. A walkway is offset from the boundaries of the amphitheatre, protected by walls of tinted glass, but open to the sky. Glass-encased trees and plants envelop the space outside, built to look like life-size terrariums. Cherry blossoms dot the exterior of the space, further bringing out the tint of the glass. The theatre is designed as an ode to the Renaissance, as well as to create an experience of drama and beauty.

### KEY VISUALISATIONS



Landscape Back View



Theatre Interior

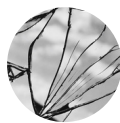


Light-Shadow Maze



Landscape

### MATERIALS



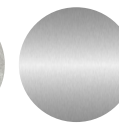
Mirror



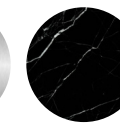
Sandstone



Polished  
Concrete



ALuminium



Reflective Onyx

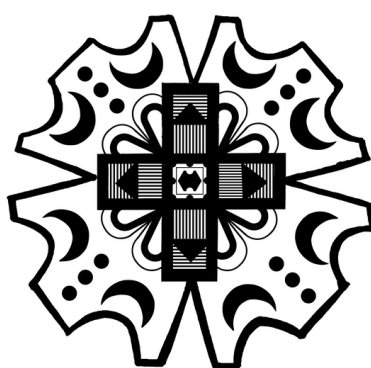


Pink Tinted  
Glass

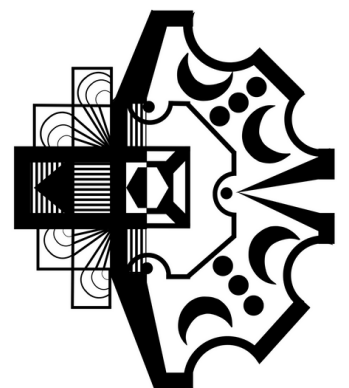


Glass

### SKETCHES



Concept for Theatre Plan



Concept for Theatre Plan

### PLAN







### BRIEF

- understand problem areas with the existing design
- implement a new lighting design
- utilise natural and artificial light
- include flexible aspects of design

### SOFTWARE USED

- AutoCAD
- SketchUp
- Revit
- Enscape

### DESCRIPTION

After interchanging ideas, it was unanimously decided that bringing in natural light was going to be an integral part of the project. To implement this, we added angled 'fins' outside the theatre to bring colour to the space. All the existing rooms on the ground floor were demolished, clearing the obstructions to the glazing. Timber acoustic sliding doors were added between columns to allow people to open them conveniently when natural lighting was required, and close them when it wasn't.

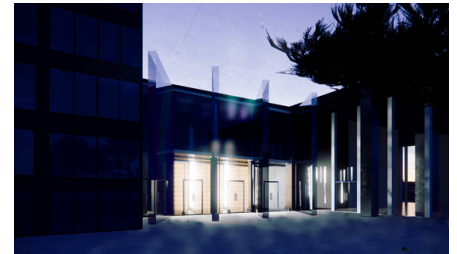
Artificial lighting included was intended to be creative, as well as to add drama to the space. A hallway was created to access the entrance of the theatre, with 'arched' lighting. The gallery next to the theatre has a reflective rippled metal ceiling, paired with laser lighting and reflective floor tiles to bring in a sense of theatrics while keeping the "technological" aspect of the Institute. The colour scheme of the space was changed from warm tones to cool tones, which was done by getting rid of the bright timber and changing it with black carpeted flooring, walnut timber panels, royal blue suede for seat covers and charcoal paint finish on the walls and ceiling. A faux window was added behind the stage with LED lighting to allow varied stage production opportunities.

Note: This was a group project.

### KEY VISUALISATIONS



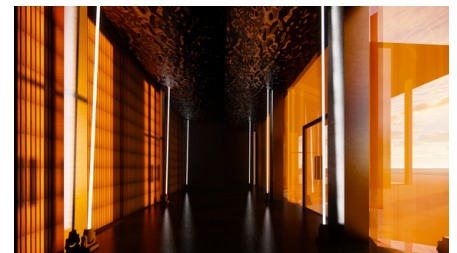
Theatre Interior



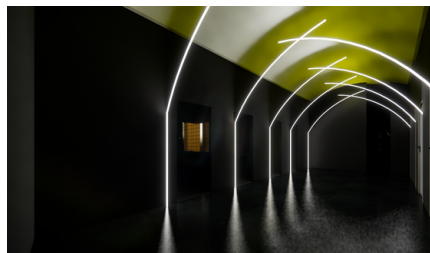
Theatre Exterior (Night)



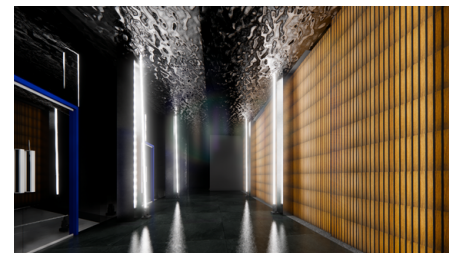
Theatre Exterior (Day)



Gallery (Sunset)



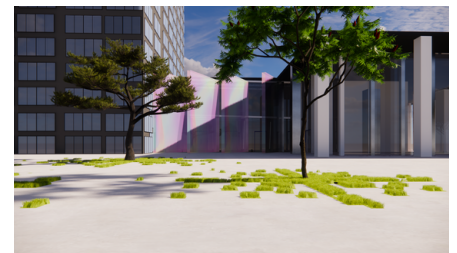
Hallway leading to the Theatre



Gallery (Night)

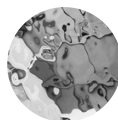


View from Mezzanine

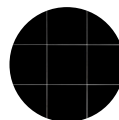


Landscape Design

### MATERIALS



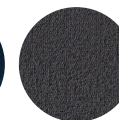
Rippled Ceiling



Glossy Ceramic Tile



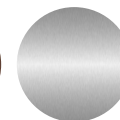
Navy Suede



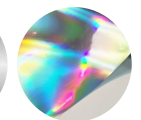
Charcoal Carpet



Timber Panel



Aluminum Sheet



Dichoric Film Blue